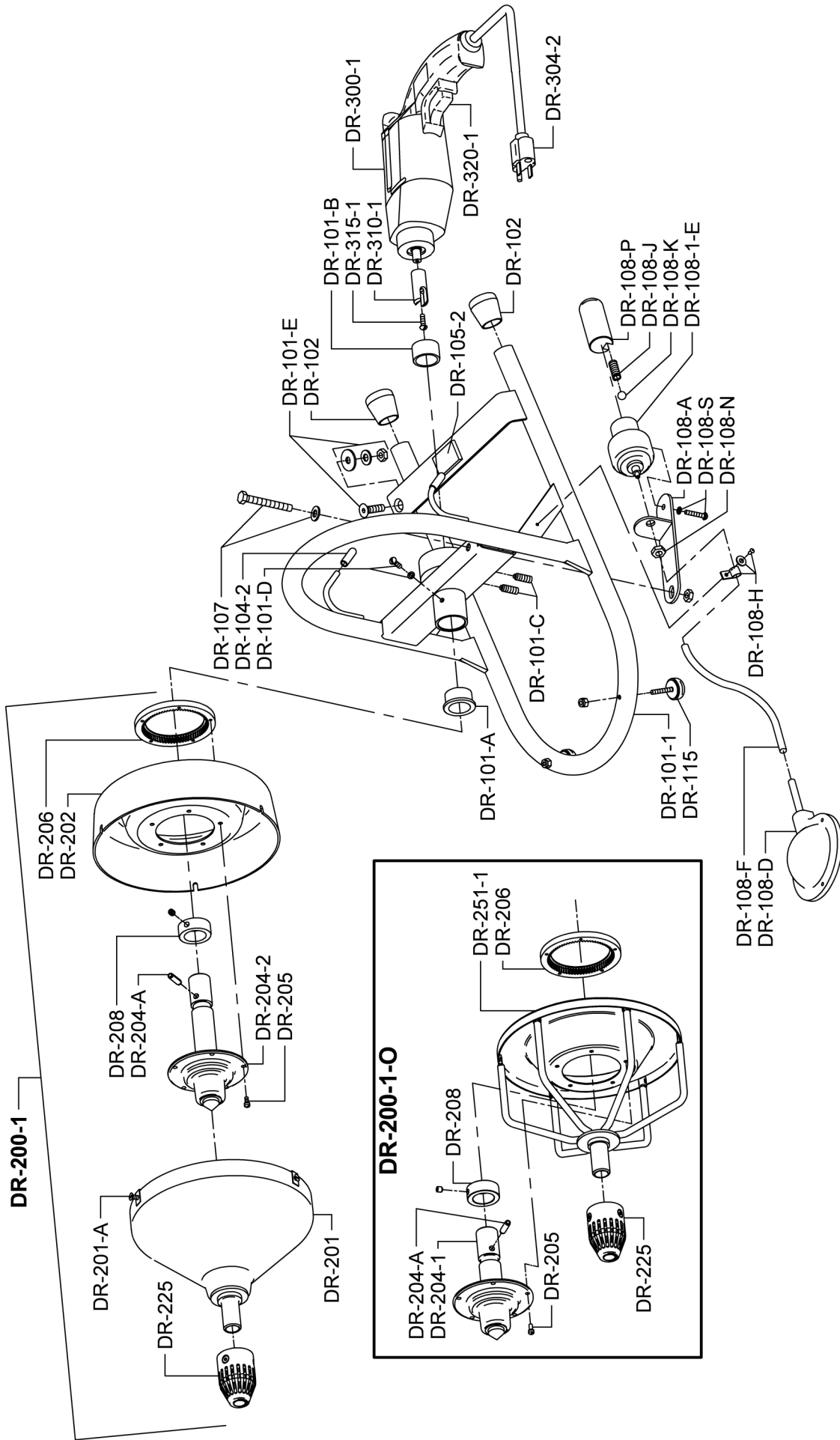


DRAIN-ROOTER PARTS LIST

CAT. NO.	DESCRIPTION	CAT. NO.	DESCRIPTION
DR-100-1	Frame Complete for Skil Motor #6355-GWS	DR-201-A	Screws & Clips (3)
DR-101-1	Frame Only for Skil Motor #6355-GWS	DR-202	Container Back
DR-101-A	Front Bushing	DR-204-1	Hub for Skil Motor (Open Drum)
DR-101-B	Rear Bushing	DR-204-A	Roll Pin
DR-101-C	Bronze Tip Set Screw (2)	DR-204-2	Hub w/Shaft for Skil Motor #6355-GWS (Closed Drum)
DR-101-D	Shaft Retaining Screw w/Lock Washer	DR-205	Screws & Nuts for Hub (5)
DR-101-E	Motor Support Adjusting Screw, Washers, & Nut	DR-206	Internal Ring Gear for Skil Motor
DR-102	Rubber Leg Tip (2)	DR-207	Shim
DR-104-1	Drum Retaining Latch for Skil Motor	DR-208	Collar w/Set Screw
DR-104-A	Drum Latch Cap	DR-210-A	Roll Pin
DR-104-2	Rubber Cord Wrap Tips (2)	DR-215	Collar
DR-105-1	Retaining Latch Spring for Skil Motor	DR-225	Jacobs Chuck
DR-105-2	Foam Pad	DR-200-1-O	Open Cage for Skil Motor
DR-106-1	Retaining Latch Support Bracket for Skil Motor	DR-251-1	Cage Only for Skil Motor
DR-107	Nut, Bolt & Washer for Actuator Bracket	DR-252	Cable Retaining Spring
DR-108-1	Switch Actuator Assy. for Skil Motor	DR-253	Retaining Nut
DR-108-A	Switch Support Bracket	DR-254	Washer
DR-108-B	Foot Pedal & Hose	DR-260-A	Roll Pin
DR-108-C	Hose Clamp	DR-225	Chuck
DR-108-D	Foot Pedal Only	DR-300-1	Skil Motor Assembly
DR-108-1-E	Switch Actuator w/Cylinder for Skil Motor	DR-301-1	Bolts & Nuts for Skil Motor
DR-108-F	Hose	DR-304	Gear Case Body for Skil Motor - Discontinued
DR-108-G	Nut, Bolt & Washer for Bracket	DR-304-1	Power Cord for Skil Motor
DR-108-H	Cord Clamp w/Rivet & Washer	DR-304-2	Power Cord for Skil Motor #6355-GWS
DR-108-J	Spring	DR-305-A	Thrust Bearing
DR-108-K	Ball	DR-307	Pinion Gear Assembly for Skil Motor
DR-108-N	Nut	DR-310	Spacer Washer
DR-108-P	Piston	DR-310-1	Drive Yolk
DR-108-S	Screw & Washer	DR-315	Fillister Head Screws (4)
DR-115	Rubber Feet, Bolts, & Lock Nuts (2)	DR-315-1	Reverse Thread Screw
DR-200-1	Container Complete for Skil Motor	DR-320	Variable Speed Trigger Switch for Skil Motor
DR-201	Container Front w/Spindle	DR-320-1	Trigger Switch for Skil Motor #6355-GWS

DRAIN-ROOTER SCHEMATIC DIAGRAM



IMPORTANT: When ordering, give Serial Number of Machine.