

How to Set-Up the WiFi Feature on Gen-Eye Camera Systems iOS and Android

1. On your cell phone, tablet, or other Wi-Fi enabled device, go to the App Store (iOS) or Play Store (Android).
2. Search for and download "Mi-Cam Pro" if using iOS (Figure 1), or "Mi-Cam" if using Android (Figure 2).

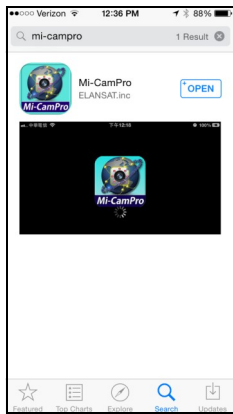


Figure 1

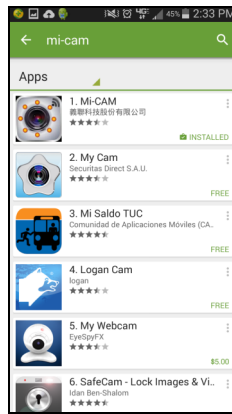


Figure 2

8. On the Mi-Cam app, open settings (the gear icon) and select Camera/Video Setting. (iOS = Figure 7; Android = Figure 8.)

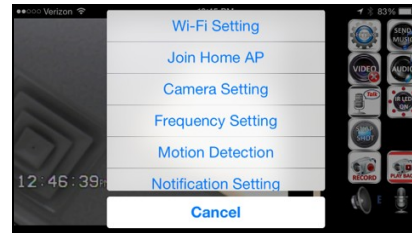


Figure 7

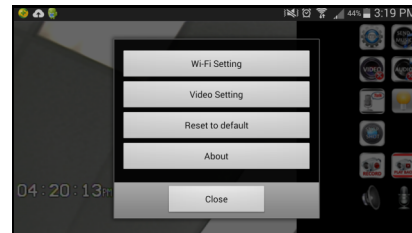


Figure 8

3. On your device, open "Settings". (iOS = Figure 3; Android = Figure 4.)



Figure 3

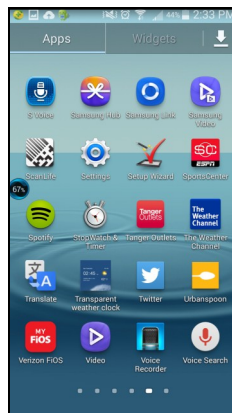


Figure 4

9. On iOS, set to 25 fps, MPEG4, VGA.



Figure 9

On Android, set to MPEG4 VGA.

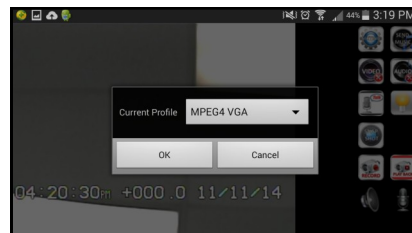


Figure 10

4. Select "Wi-Fi".
5. Select "GSW_..." (the numbers appearing after GSW may vary), and connect. (iOS = Figure 5; Android = Figure 6.)

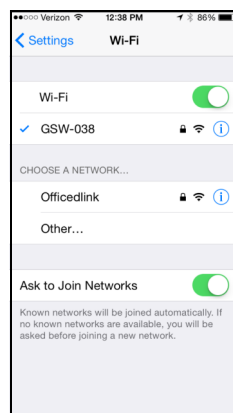


Figure 5

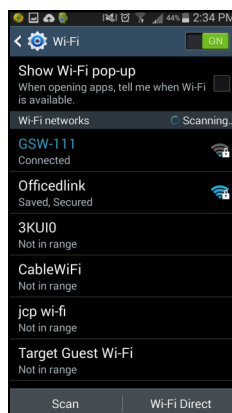
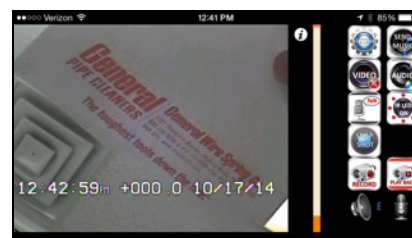


Figure 6

10. If on, turn audio off by touching "Audio". (A red 'x' will appear on feature.)



11. Use the buttons on the app to record video, or take still shots. Video and stills are stored in your device's gallery.

If you need assistance, call the Drain Brains® at 1-800-245-6200.

6. Open the downloaded Mi-Cam app on your device.
7. Enter Camera Wi-Fi Password: **12345678**